

Witness Name: Katherine Victoria Burt

Statement No: WITN6392001

Exhibits: WITN6392002 - WITN6392267

## **INFECTED BLOOD INQUIRY**

---

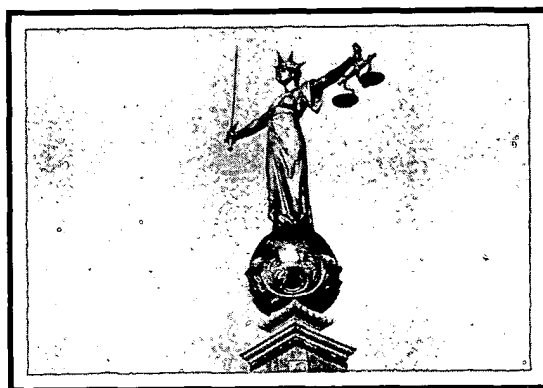
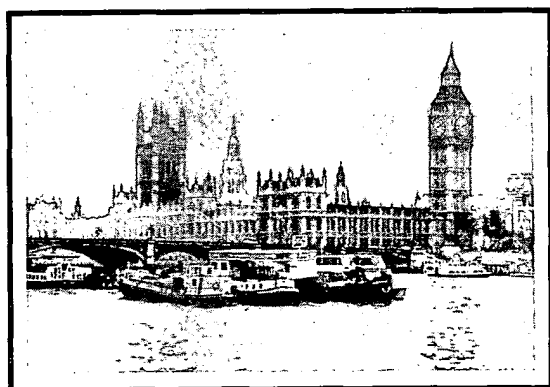
**WITN6392033**

---



**1989**

# **Annual Report**



**The Haemophilia Society  
A review of 1989**



Photograph by Camera Press

**PATRON:**

*H.R.H. The Duchess of Kent*

**PATRON**  
H.R.H. The Duchess of Kent

**President:**

Mrs. Catherine Cookson, OBE, MA

**Vice-Presidents**

Dr. Rosemary Biggs, MA., MD., FRCP.  
Dr. S. H. Davies, MB., ChB., FRCP., FRCPATH.  
Robert Key, MP.  
Frank Field, MP.  
J. F. Wilkinson, PhD., MSc., MD., FRCP., FRIC.  
The Baroness Masham of Ilton

**Honorary Officers:**

**Chairman**

The Revd. A. J. Tanner, MA.

**Vice-Chairmen**

K. E. Milne, BSc.

Mr. J. L. Prothero (until October 1989)

Mr. R. A. Cowe, BA, MBA, ACIS, MBIM (Co-opted October 1989)

**Treasurer**

Mr. J. Lander, LL.B

**Executive Committee:**

Mr. K. Colthorpe

Mrs. J. Hodgson

Mr. G. Kirman, Eng. Tech., AMSERT

Mr. J. D. Miller, B. Comm.

Mr. T. Fitton, BA, ATD

Mr. C. Knight, BA

Mrs. C. Hazlewood

Mr. R. Dickason, BSc (Hons) (Co-opted January 1990)

**Medical Advisory Panel:**

Professor A. L. Bloom, MB., ChB., MD., MRCP., FRCPATH.

Dr. B. Colvin, MA., MB., MChir., MRCP., MRCPATH.

Dr. P. Kernoff, MD., FRCP., MRCPATH.

Dr. C. A. Ludlam, PhD., BSc., MB., ChB., FRCP, MRCPATH.

Dr. E. E. Mayne, MD., MRCP., FRCPATH.

Professor F. E. Preston, MD, MRCP, (London) FRCPATH

Dr. C. R. Rizza, MD., FRCP(Edinburgh).

Dr. E. G. D. Tuddenham, MD., MB., BS., FRCP., FRCPATH.

**General Secretary:**

David G. Watters, J.P.

**Office Staff:**

Paul Burba

Secretary

Jonathan Cooper BA(Hons)

AIDS Co-ordinator

Douglas Jack MA

Fundraising (Part-time)

Jude McGuigan

Clerical Assistant

Linda Matthews BSc (Hons)

Administration Secretary

Heather Maynard

Personal Secretary to the General Secretary

**Volunteer:**

Alan Weir

**Auditors:**

Pridie Brewster

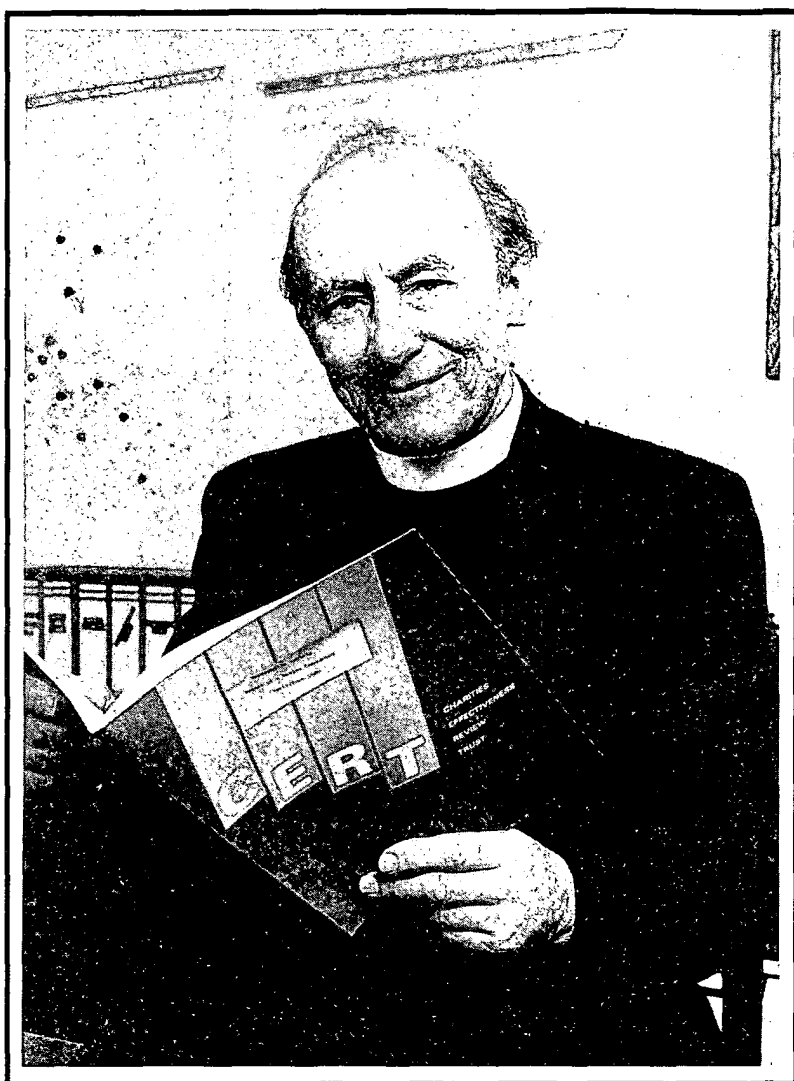
**Solicitors:**

Paisner & Co., London

**Bankers:**

National Westminster Bank PLC

Registered Charity no. 288260  
Company limited by guarantee (Reg. no. 1763614)  
Registered office 123 Westminster Bridge Road London SE1 7HR



Photograph by GRO-A

## CHAIRMAN'S STATEMENT

"Man is a social animal," wrote Aristotle, pointing to the yearning for fellowship, which is one of our deepest needs. This report shows how the Haemophilia Society has worked towards providing that fellowship throughout the year, especially for those who felt isolated or in particular need of support. It is a record of splendid achievement but, alas, it is tinged with sadness as well.

One of the major achievements in 1989 was in the success of our representations to the Government which led to a further ex-gratia payment to people with haemophilia affected by HIV infection through the use of blood products. We are indebted to many people who were involved in the campaign and particularly to those Members of Parliament who supported us.

Another notable development was the review of the organisation to assess our efficiency in the use of the limited resources available to us. We saw the need for an objective appraisal and were fortunate in securing the assistance of the Charities Effectiveness Review Trust (CERT) for this professional assessment. CERT considered the Society to be a successful and healthy organisation but was able to offer some very constructive suggestions for maintaining and developing the Society's work in the future. As a result of this advice we shall, for instance,

devote more of our resources to "member services" and to the local Groups of the Society.

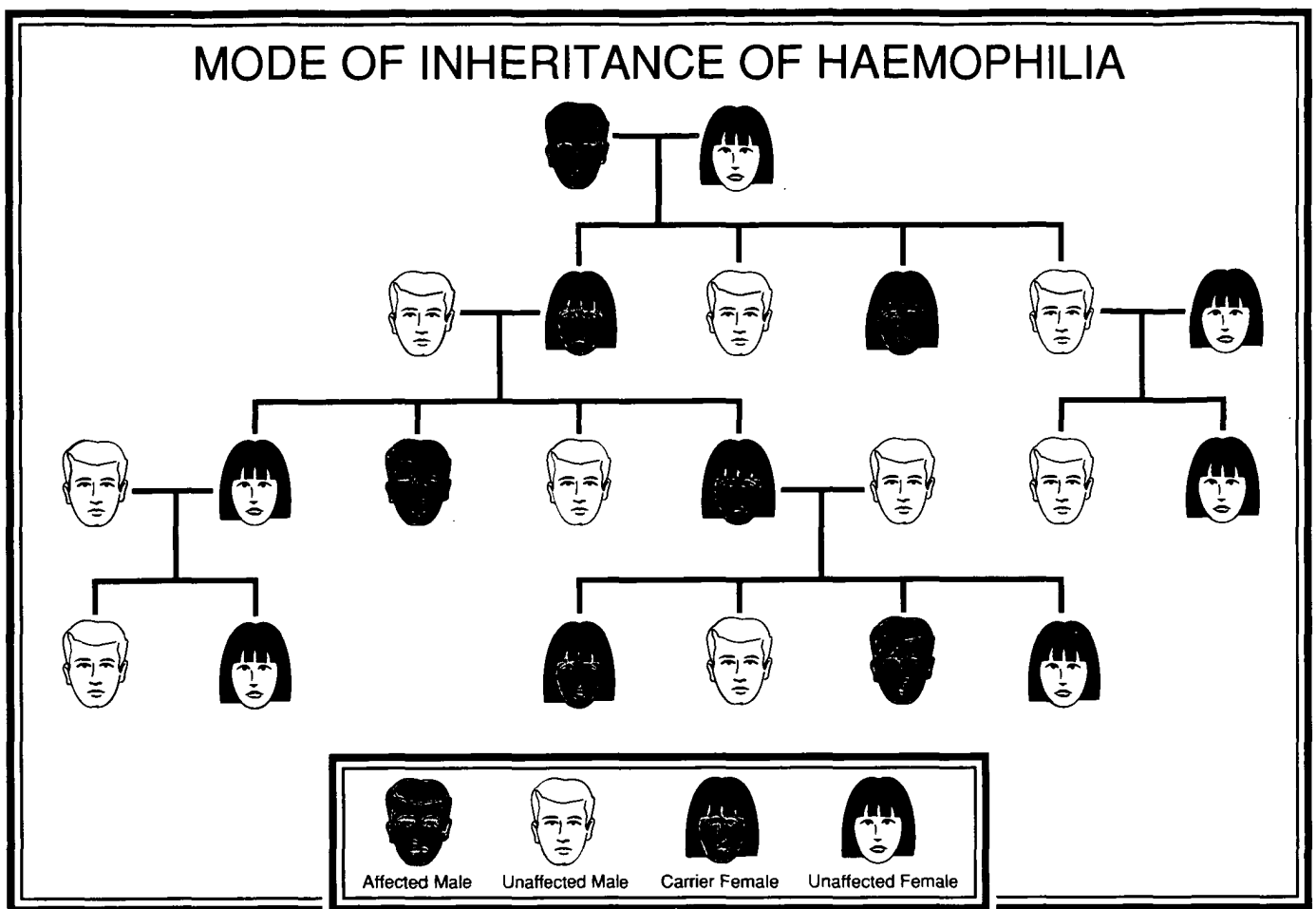
These achievements have been made possible by the time and the energy devoted to their work by members of the Executive Committee and by the competence and commitment of our staff. I take this opportunity to express our gratitude to David Watters, our General Secretary, for his skill and efficiency in managing our affairs and for the inspiration he brings to all our work.

It is with sadness we record the death of a number of people who have served the Society well, among them three distinguished men: Mr. John Prothero and Dr. Ludwig Kuttner, both of whom were Vice-Chairmen, and Mr. Kenneth Polton, MBE, who held high office in the Society for many years. In the Bulletin of the Society we have expressed our gratitude to them individually but, of course, the best tribute we can pay them is in continuing the work they began.

To this endeavour we rededicate ourselves for the years ahead and we ask our friends to support us in the commitment to serve all people with haemophilia, and those close to them, as we face the future together.

GRO-C

## MODE OF INHERITANCE OF HAEMOPHILIA



## WHAT IS HAEMOPHILIA?

Haemophilia is a blood disorder in which one of the essential clotting factors is either completely or partly missing. Deficiencies of factor VIII or factor IX are the main cause of the condition.

Because of this a person with haemophilia may bleed for longer than normal. Cuts and grazes are not great problems but internal bleeding into joints, muscles or soft tissues is because it results in acute pain and can lead to disabilities such as chronic degenerative arthritis.

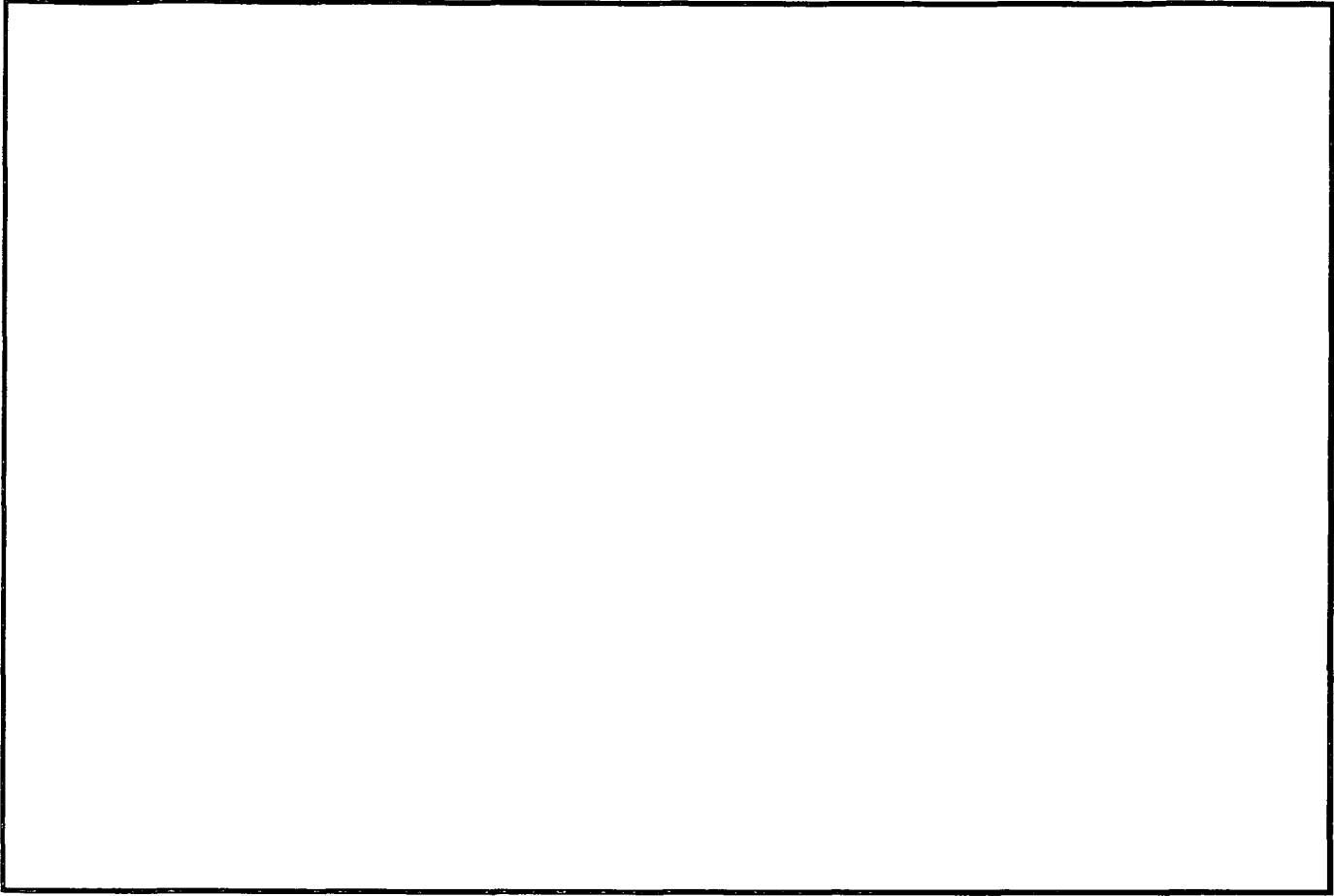
Haemophilia is usually hereditary but can appear in any family. It is carried by females but generally only males are affected. There are around 5,000 people with haemophilia in the United Kingdom. It is a lifelong condition for which there is no known cure.

In recent years treatment has become available in the

form of intravenous injections of the missing clotting factor. This has greatly improved the lives of people with haemophilia.

VonWillebrand's Syndrome is a variation of haemophilia in which factor VIII deficiency is combined with a platelet disorder. In most respects vonWillebrand's Syndrome is similar in its symptoms and treatment to haemophilia itself but the inheritance pattern is different in that it affects both men and women.

Many people with haemophilia are now able to keep treatment materials at home so that bleeding episodes can be treated immediately with only minimum disruption to education and employment.



*Controlling the production of blood products.*

## MEDICAL MATTERS

Blood products, their purity and availability, are of the utmost importance to people with haemophilia. It is therefore a major role of the Society to ensure that adequate, safe, supplies of product are available in the UK.

During the year new records of production were achieved at the Blood Products Laboratory which manufactures the relevant blood products for England and Wales. In Scotland the Protein Fractionation Centre continued to achieve levels of production equal to self-sufficiency for Scotland and Northern Ireland.

Products using new technology continue in use and the Society welcomed the licensing of a new high purity monoclonal product by the Committee on the Safety of Medicines. Clinical trials of synthetic factor VIII continue in the UK. In the longer term, the full implication of

modern technology products, their efficiency and cost, will demand careful consideration in the UK.

The Society continues to enjoy valuable working relationships with health care professionals involved in haemophilia care through involvement with the Haemophilia Nurses' Association, the Social Workers' Special Interest Group in Haemophilia, the Haemophilia Chartered Physiotherapists' Association and the Haemophilia Centre Directors' organisation. Appreciation is also expressed to our Medical Advisory Panel for their valued advice and support.

Grants awarded during the year covered aspects of concern as diverse as the direct provision of facilities at Centres and research into carrier detection techniques using DNA technology.



*Fundraising is often high on the list of priorities with local Groups, and in this picture the Scottish Group Secretary Kenneth Holmes receives a cheque for £13,000 from the Edinburgh Charity Ball.*

## MEMBER SERVICES: LOCAL

The provision of fellowship and individual support to people with haemophilia and their families has always been and continues to be a major aim of the Society. In large part this is achieved through the thirty local Groups located throughout the country. Many dedicated members devote much time to furthering the influence of the Society through these local contacts. Outside agencies have often remarked on the extent to which the Haemophilia Society relies on the involvement of people with haemophilia themselves in serving the needs of others in the same situation.

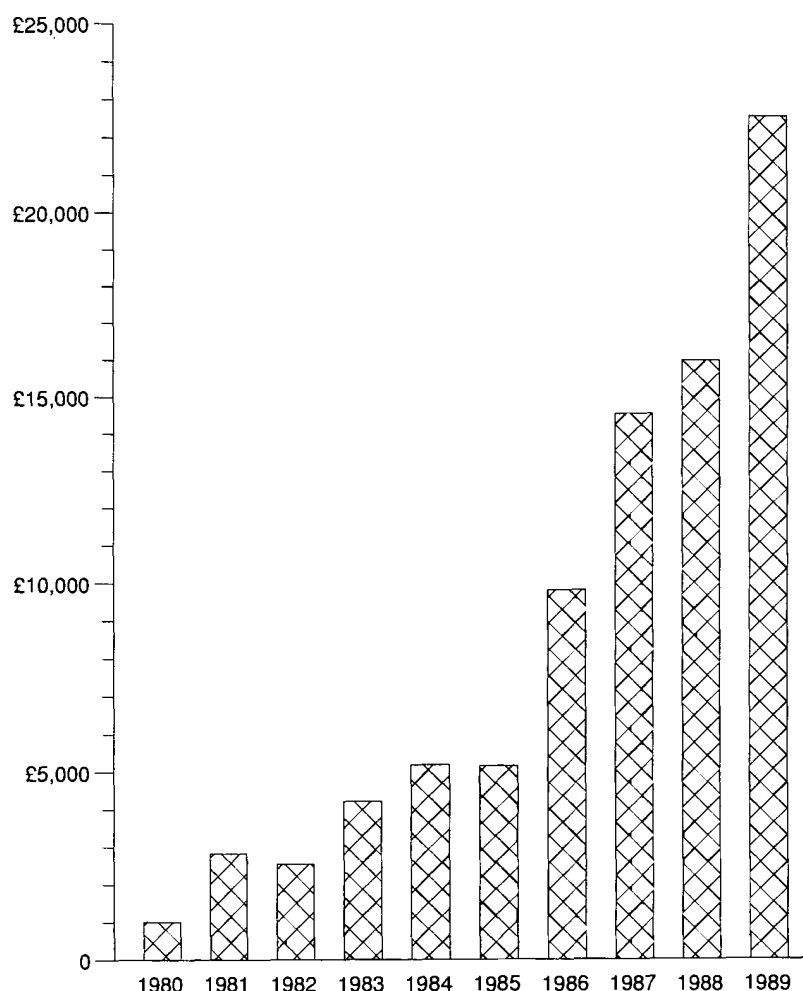
For many years the North Wales Group has organised an annual Adventure Holiday for boys with haemophilia. The importance of this activity resulted in

the presentation in 1989 of the Haemophilia Society Award to Dr. Tom Korn and Mrs. **GRO-D** for their service in organising and participating in the North Wales Adventure Holiday. In 1989 the Grampian Group established a Scottish Adventure holiday which was also fully subscribed.

Seven caravans are operated by the local Groups, giving members an opportunity to enjoy economical holidays in sympathetic surroundings. Through the local Group network the Executive Committee also have direct access to consult with those who represent groups of people with haemophilia at a local level. This is a vital link in the life of the Society.



## WELFARE GRANTS EXPENDITURE



## MEMBER SERVICES: NATIONAL

"The Society succeeds in making individual people feel better as a result of their contact with it". Those words are taken from the CERT report on the work of the Society. They also represent an ongoing challenge to the daily work of serving the interests of people with haemophilia.

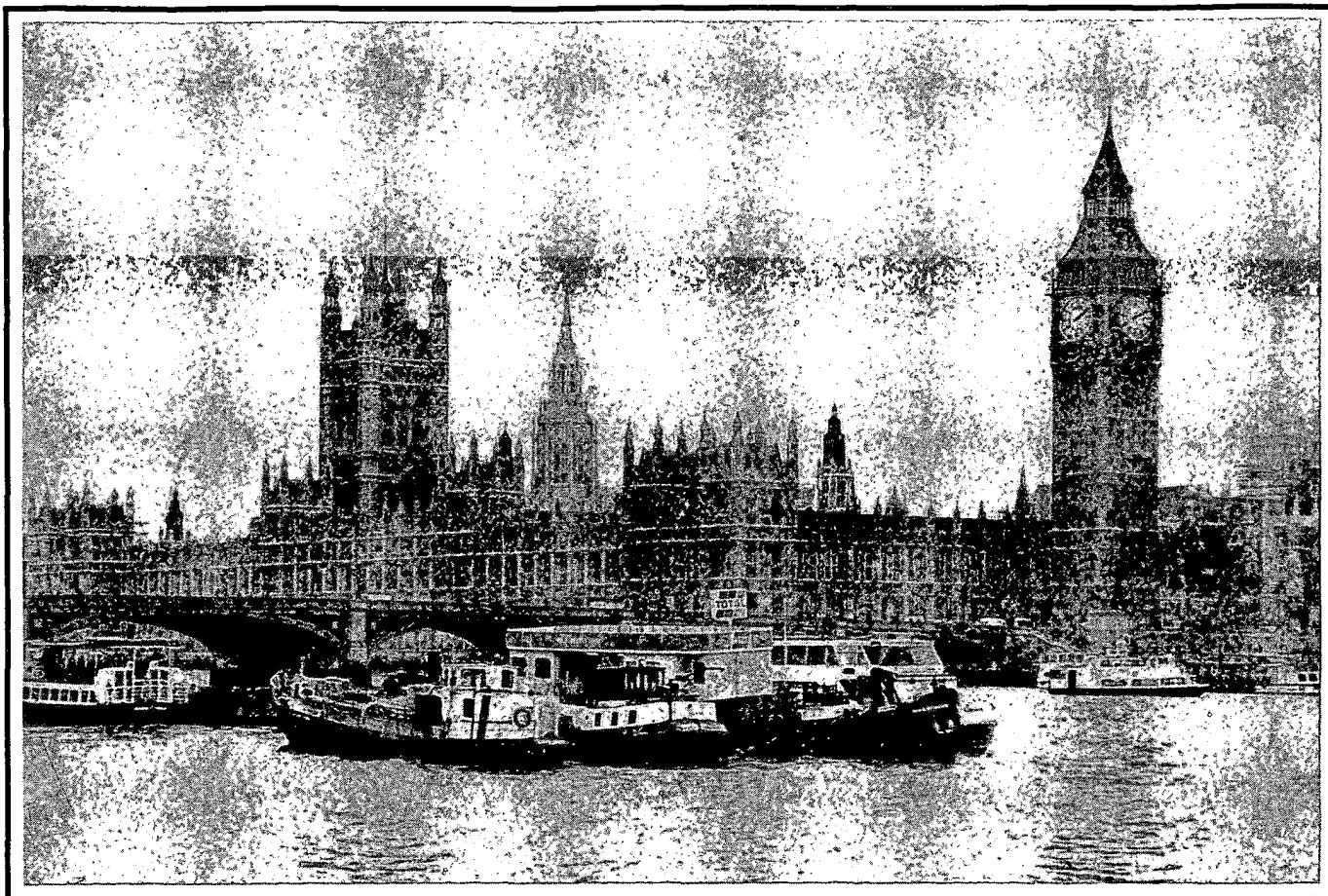
The services provided from the national office of the Society are diverse and range through advice and support, the publication of information and periodicals, to the provision of grants to members in need and representation at Tribunals.

During 1989 an important booklet on education and haemophilia was published and thanks are recorded to Mrs. C. Brown, Mr. R. Dickason and Mr. E. Ryan for their specialised help with that project. As a result of growing

demands for information about haemophilia, a new edition of "Introduction to Haemophilia" was published.

The General Secretary continues to support those applying for a variety of state benefits. It is conservatively estimated that as a direct result of the Society's actions on behalf of members in recent years some £3m per annum is now paid directly to people with haemophilia in Mobility and Attendance Allowances.

Individual grants to members achieved new record levels of expenditure in 1989. The undoubted cause of this dramatic rise in need is the impact of the current social security legislation which has left so many people in an unfortunate poverty trap.



*The Palace of Westminster, London.*

## CAMPAIGNS

The greatest concerns facing the Society for the past seven years have been associated with HIV infection acquired through the use of contaminated factor VIII. Despite the creation of the Macfarlane Trust in 1988 to meet the immediate needs of people with haemophilia and HIV, the Society has always been of the view that those who had been so tragically infected should have a measure of control over their own financial affairs.

It was with this in mind that a campaign was launched during 1989 to persuade the Government to settle, out of Court, the many claims for compensation which had started in the High Court. This disaster – the greatest single tragedy in the history of the National Health Service – demands the utmost compassion by Government. While their immediate response with a grant of £24m, to enable each infected person with haemophilia to receive £20,000, was welcome, it did not meet the main thrust of the campaign.

The Society was fortunate in having the services of GJW Government Relations, who made an invaluable contribution of free advice and manpower. Many MPs from both sides of the House gave their support and thanks are most especially due to Robert Key, Frank Field, Patrick Cormack, Jack Ashley, Alf Morris, Geoffrey Johnson-Smith, Emma Nicholson, John Hannam, Sir Michael McNair-Wilson, Sir Bernard Braine, Sir Russell Johnston and John Marshall for their encouragement. The help of The Sunday Times was also important and greatly valued.

During the year the Society was also involved in supporting the Citizens' Compensation Bill and in the expression of grave concern in relation to the current review of the Health Service.



*This picture shows the Grand Draw in process at the 1989 International Airlines Charity Ball. The Ball has been an important regular source of funds for the Society for several years.*

## FINANCING THE SOCIETY

The scale of operations of the Society has grown enormously over recent years. It is to the great credit of those who manage the finances and fundraising of the Society that resources have been able to meet the demands which have been made.

The changes in the social security system referred to on page 7 have placed an increased financial burden on the Society. The provision of all the other member services is dependent on adequate funding.

In recent years the International Airlines Charity Ball has benefited the Society by many thousands of pounds. The multitude of people who support the Annual Draw contribute greatly to the income. The Society is also grateful to those inmates of HMP Wormwood Scrubs for a collection of paintings which were exhibited and sold – and to those who made this event a success, notably Helen Cooper and David Ross. BBC Radio 4 granted the

Society a Radio Appeal in August and thanks go to Dr. Mike Smith who made the appeal.

Corporate giving is increasingly important. The work of Douglas Jack, the Society's fundraiser, is aimed at expanding the base of corporate donors.

The Society is acutely aware of the fine balance between income and expenditure and the very small cushion of reserve available. The Treasurer and the senior staff have established and now operate a highly efficient budgeting and financial control system. Nevertheless the services which the Society offers to people with haemophilia are totally dependent on the income which is generated.

The Society is exceedingly grateful to all who have contributed to the work during 1989. A full list of donors appears on pages 12 and 13 and to each is extended warm thanks.



*The 1989 Staff Team: Back (l to r) Paul Burba; Jonathan Cooper; David Watters; Douglas Jack. Front (l to r) Heather Maynard; Linda Matthews; Jude McGuigan (Absent: Alan Weir).*

## STAFF

The work of the Society and the benefits it delivers to people with haemophilia depend on the skills of the staff employed. It would not be possible to provide the personal advice, the range of publications and the representation that members of the Society, the medical profession and the media have come to expect of the Society, without the expertise of the people who work in the national office.

The General Secretary, David Watters, heads a group of seven staff. During 1989 his particular strengths have been devoted to the campaigns the Society has promoted, the specialised work of representing people with haemophilia at Medical Appeal and other Tribunals, and the increasingly demanding work of developing the new systems and structures needed to fit the Society for the 1990s.

Linda Matthews carries on the invaluable work of administering the Society's accounting system, managing our membership records and providing the diverse information needed to run the organisation. Without the sound and secure administrative base which

Linda provides, the Society could not sustain the level of service it now gives.

Jonathan Cooper has devoted much of his time to extending the Society's network for caring for people with haemophilia and HIV. A Paediatric Symposium was a particular triumph. He has also played an active part in our international affairs.

Heather Maynard, personal secretary to the General Secretary, plays an increasingly important role in the Society's operations. Douglas Jack has joined the Society as the part-time fund-raiser. Paul Burba continues to deal with secretarial functions and the problems associated with growing numbers of personal and telephone callers. Jude McGuigan and Alan Weir deal with the many requests received for literature and information.

All the Society's staff command the highest admiration from all who come in contact with the Society. To them, individually and collectively, the Society records its deepest thanks for their unstinting devotion and dedication to their work.



## INTERNATIONAL

Through membership of the World Federation of Hemophilia – of which The Haemophilia Society was a founder member – a consistent level of concern for and support of people with haemophilia in other countries has been shown.

During 1989 the Society has played a co-ordinating role in a newly formed European Consortium of national organisations representing people with haemophilia, formed as a direct result of an initiative taken by the Netherlands Society.

Support was given to the Irish Society in their campaign for Government recognition of the special needs of people with haemophilia and HIV in that country. A close bond exists between the UK and Irish Societies.

The Society was pleased to host a meeting of the WFH Professional Management Staff Committee of

which the General Secretary is current Chairman. At the meeting, which lasted two days, Societies in the USA, Australia and Canada were represented.

The Chairman attended an International Training Workshop in India, representing the Society's continuing commitment to people with haemophilia in India.

During 1989 the USA Congress policy which classified HIV as 'a serious contagious disease' began to impinge directly on people seeking entry to that country. It came as a matter of very deep regret that as a result the Society felt unable to use Society resources to cross the frontier into the USA.

While WFH has made some progress towards achieving a change in the law, until the statute has been reviewed the UK will not be able to participate in the forthcoming Congress in Washington during August 1990.

# DONATIONS 1989

We extend warm thanks to all those people who have made donations to the Society throughout the year. Below we list all those whose donations exceeded £50 but we also wish to say a heart-felt thank you to those who pay by Standing order, those with Deeds of Covenant, those who contributed to the London Marathon and to our 1989 Runner – Dr. Mark Winter. Our thanks are also extended to all those who donated to the John Prothero Memorial Fund; those who helped with and supported the Prison Art Show – not forgetting the inmates of HMP Wormwood Scrubs.

In addition we are, as always, grateful to our local Groups and all those who so selflessly support their work – and ours! – during the year.

We are extremely grateful to the Committee of the International Airlines Charity Ball. For four years now we have benefited from their major fund-raising function at the Royal Albert Hall in London and many people with haemophilia have cause to be thankful to them.

Our own Annual Draw continues to attract much support and we say thank you to all those who sold tickets on our behalf – as well as those who bought them.

Finally, we thank those who support our work through the 'Give as you Earn' scheme and the huge number of people who supported Dr. Mike Smith's BBC Radio 4 'Week's Good Cause' appeal.

## Individuals:

GRO-D

## In memory:

GRO-A

## Bequests:

Eva Holding, Mrs M Powell, Jean Nancy Simpson.

## Fundraising Events:

Airlines Ball, 3rd Alveston Brownie Pack, Alveston Singers, Annual Draw, Dawn Baker's Run, Bleadons WI, Chiseldon Wives Group, Dance Club 21, Mrs Dodson's Gymkhana, Dragons School, East & West Lodge Ladies Festival, 20 Electronic Workshop Wives Club, Scott & Bill Etherington's Walk, Full Sutton Prison Officers Club, Haunslows Bridge Club, Inner Wheel of Queen's Park, Richard Lee's Marathon, Lions Club of Devizes, Local Groups, Millionaid, Minder Garrison's Wives Club, Carol Muir's Run, Mrs Newham's Party, Nike Womens Own Race, Mr David Norris's Climb, Parish of Christ the King, Salford, Parish of St Luke Kew, Phoenix Singers, Plymouth Marathon, Pond House Pub, Portland Arms Pub, Prison Art Show, Queen Annes School, Ross Young Farmers Club, Shelleys Hair Boutique, Sky Television, Southern Derbyshire HA, St Botolph's Church, St Catherine's Church, St Nicholas Church, Loxley, St Philips Young Phoenix Club, St Western Lodge No 4004, Stockton Inner Wheel Club, Stoke Inn, Corporal Thomson's Event, Tippet Hen Club, Trident Club, University House, University of Birmingham, Upton Young Wives, Mr and Mrs Wall's Dance, Weeks' Good Cause, Mr Wheble's Quiz, Mr White's Ball, Mrs Wilson's Keep Fit Class, Dr Mark Winter's Marathon, Woodstock Surgery, Wycombe Abbey School.

## Trusts and Companies:

Abbey Life, Adshead Ratcliffe, Adwest, Agfa-Gavaert, Air Seychelles, Alchemy Foundation, Aldwyns Trust, Alex M Jacob Charitable Trust, Alfred de Rothschild Charity, Alfred Dunhill, Alfred Haines Charitable Trust, Alpha, Anchor Foods, Andrew Anderson Trust, Ansells, APV, Armour, Associated British Foods, Austin Rover, Bank of England, Bank of Scotland, Barclays, Beatrice Laing Trust, Benham Charitable Trust, Ben Fenn-Tye Trust, Bernard Meyers, Birmid Qualcast, Blood Products Laboratory, BNH, Boeke, Brand Trust, Bridon, Bright Steels, British Alcan, British Midland, British Telecom, Britannic Assurance, Brixton Estate, Bryan Lancaster's Trust, Brymill, BTR, C T Bowring, Cazenove, CBS, Celia Benham Christie Charitable Trust, Chartered Consolidated, Chelsea Building Society, Christian Dior, Christopher Rowbotham Charitable Trust, Clothworkers' Foundation, Clover Leaf, CMB, Colgate-Palmolive, Colonel W H Whitbread's Charitable Trust, Colonial Mutual, Commercial Union, Confederation Life, Cornhill Insurance, Cotton Trust, Courage, Courtaulds, Coutts, Credit Suisse, Cyril Wiggins Charity Trust, D W Greenwood Charitable Settlement, Dalgety, Davy Corporation, Dawson International, De Clermont Charitable Company, Del Monte, Delta, Denise Cohen Charitable Trust, Dominion Insurance, Doncaster Packaging, Douglas Turner Trust, Dowager Countess Eleanor Peel Trust, Dowty Group, Drapers' Charitable Trust, Dunner Charitable Trust, E W Taylor, Eagle Star, East Neuk, Edward Cadbury Charitable Trust, Esselte Letraset, F C Pollard Charitable Trust, Fairview, Fitton Trust, Fortnum and Masons, Forum Lodge No 3537, G M Wolfe Family Charitable Trust, G Plan, G S Plaut Charitable Trust, Gabriel Harrison Foundation, GEC, George Ballantine, George Wimpey Charitable Trust, Gerald Bentall Charitable Trust, Gerrard & National, Gilbert and Eileen Edgar Foundation, Girdlers' Company, Girobank, Glaxo, Godinton Charitable Trust, Grand Charity, Grand Metropolitan, Haberdashers' Company, Harold Hyam Wingate Foundation, Harris & Sheldon, Harris Charitable Trust, Harrods, Henry Ansbacher, Hobart Manufacturing, Hon P N Gibson's Charity Trust, Hoover Foundation, Hoseasons, Hospital and Medical,

Humanitarian Trust, Hunting Group, Ian Fleming Charitable Trust, Iceland, Illingworth Henriques, IML, Immuno, Inchcape Charitable Trust, Inverforth Charitable Trust, Ironmongers' Company, J Davies (Charities) Ltd, J N Derbyshire Trust, J T H Charitable Trust, James Weir Foundation, Jan Branford Charitable Trust, Jane Hodge Foundation, John and Celia Bonham Charitable Trust, John Lewis, John Menzies, John Turner, Johnston Management, Joseph and Mary Tiley Trust, Joseph Lucas Charitable Trust, Josiah Wedgwood, K-Tel, Kalamazoo, Kent Meters, L'Oreal, Land Hind Trust, Land Rover, Lawson International, Leedhams, Lionel Wigram Memorial Trust, Lloyds Bank, London & Manchester, London Metal Exchange, Low & Bonar, Macro, Marks & Spencer, Mars, Marsh Christian Trust, Martini & Rossi, Matthews Wrightson Charity Trust, Maurice Fry Charitable Trust, Maurice Wohl Charitable Trust, McCormick, McCrone Charitable Trust, Medical Sickness, Members of Lloyds' and Lloyds' Brokers, Mercantile Group, Metal Box, Michelin, Midland Bank, Midland News Association, Millichope, Miss Marsh Charitable Trust, Moore Paragon, Moorgate Trust Fund, Morgan Grenfell, Morrison Bowmore, Mr P Wakefield Charitable Trust, Mrs D P W Down's Charitable Trust, Mrs Vera Leigh's Charity, Multitone, Murphy-Neumann, N M Rothschild, National Mutual, National Westminster Bank, Nationwide Anglia, NCR, NEL Britannia, Nestle, Newage, News International, Northern Rock, Norton Abrasives, Norwich Union, Olau, P & O, P D C Trust, P F Charitable Trust, P F W, P H H Combe Charitable Trust, Palace Gate Securities, Pan Britannica, Paul Bassham Charitable Trust, Peacock Charitable Trust, Pearl Assurance,

Pearson, Penfax, Perry Worthington Trust, Peters Trust, Pirelli, Pioneer Mutual, Pizza Express, Pizza Hut, Podde Trust, Polygram, Provident Life, Prudential, Pyke Charity Trust, R & J Lass, R M Burton Charitable Trust, Racal, Rainford Trust, Ransomes, Ravensdale Trust, Rayne Foundation, Refuge, Reliance Gear, Revlon, Robert Fleming, Rotork, Rowntree, Royal Bank of Canada, Royal Doulton, Royal London, Rugby Football Union Charitable Trust, Safeway, Sainsbury's, Samuel Montagu, Saudi International Bank, Schweppes, Seacon Charitable Trust, Seymour Foundation, Shaw Carpets, Simon's Charity, Sir Andrew Carnworth's Charitable Trust, Sir Arthur Black Trust, Sir Halley Stewart Trust, Sir John Sumner's Trust, Sir Jules Thorn Charitable Trust, Sketchley, Sabell Foundation, South London Stationers, Sovereign, St Katherine's Fund, St Quinton, Standard Chartered, Stanley Charitable Trust, Stanley Grundy Foundation, Sun Alliance, Sydney Black Charitable Trust, Thomas French, Thomas Tunnock, Thorn EMI, Thomtons, Thos Roberts, TI, Time-Life, Trebor, Trust House Forte, Tupperware, Twenty-Seven Foundation, UK Life Management, Umbro, Van Zwarenberg Trust, Victory, Vincent Finance, Virgin, W A Handley Charity Trust, W H Smith, Welconstruct, Wella, Wellcome Foundation, Welton Foundation, Wesleyan, Whesby, William Vere, Worshipful Company of Actuaries, Worshipful Company of Basketmakers, Worshipful Company of Bowyers, Worshipful Company of Carmen, Worshipful Company of Carpenters, Worshipful Company of Fan Makers, Worshipful Company of Grocers, Worshipful Company of Insurers, Y J Lovell.

---

## THE SOCIETY'S ACCOUNTS

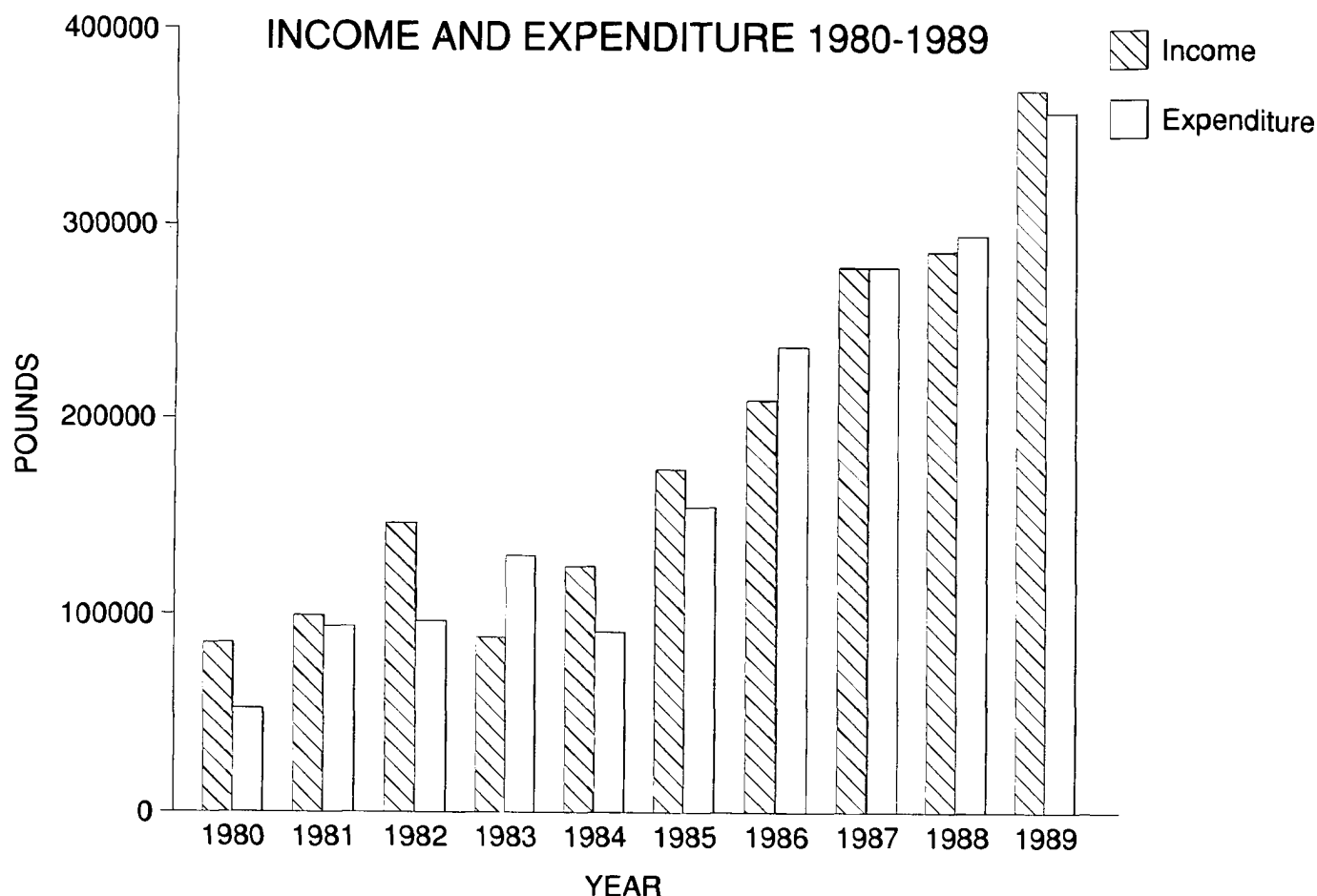
### REPORT OF THE AUDITORS TO THE GUARANTORS OF THE HAEMOPHILIA SOCIETY

We have audited the financial statements in accordance with approved Auditing Standards.

In our opinion the financial statements give a true and fair view of the state of the Society's affairs at 31st December 1989 and of its surplus and source and application of funds for the year ended on that date and comply with the Companies Act 1985.

13th March 1990

**PRIDIE BREWSTER**  
Chartered Accountants



## TREASURER'S REPORT

The simplified accounts included with this Report reflect the struggle faced by the Society, once again, in 1989. The graph accompanying the accounts shows how finance has been a constant source of inhibition to our work over the past ten years. We have taken tentative steps to change this situation by appointing our first fundraiser, Douglas Jack, on a part-time basis. Through this new appointment we hope that it will be possible to become better equipped to handle the growing needs of people with haemophilia – and especially those with HIV infections – as well as increasing our slender reserves.

My Report would be incomplete without special word of thanks to my late predecessor John Prothero who

conceived our budgeting programme and Linda Matthews for the skill and dedication with which she has carried out that programme and looked after our resources. This is no mean task and we are grateful to her. Our thanks also go to Messrs. Pridie Brewster who conducted our Annual Audit.

It should be noted that a full set of accounts will be made available to all members of the Society attending the Annual General Meeting and that they are also available on request from the national office.

**JULIAN LANDER**  
Treasurer



# BALANCE SHEET AS AT 31st DECEMBER 1989

	1989			1988
	£	£	£	£
<b>FIXED ASSETS</b>				
Tangible		26,818		35,865
<b>CURRENT ASSETS</b>				
Stocks	2,260		5,765	
Debtors	14,880		20,221	
Cash at bank and in hand	155,256		80,285	
	<u>172,396</u>		<u>106,271</u>	
<b>CREDITORS</b> (amounts falling due within one year)	12,629		4,457	
	<u>12,629</u>		<u>4,457</u>	
Net current assets		159,767		101,814
<b>TOTAL ASSETS LESS CURRENT LIABILITIES</b>		<u>186,585</u>		<u>137,679</u>
<b>RESERVES</b>				
General Accumulated Fund		178,219		137,679
John Prothero Memorial Fund		8,366		—
		<u>186,585</u>		<u>137,679</u>

Approved by:  
 Revd. A. J. Tanner, M.A., Chairman  
 Julian Lander, LL.B., Treasurer

Members of the Executive Committee

**INCOME AND EXPENDITURE ACCOUNT**  
**FOR THE YEAR ENDED 31st DECEMBER 1989**

		1989		1988
	£	£	£	£
Income		361,442		284,407
Case Committee Grants		23,358		15,935
		<u>338,084</u>		<u>268,472</u>
Other Expenditure		335,659		278,743
EXCESS OF INCOME OVER EXPENDITURE		2,425		(10,271)
Corporation Tax		—		(2,847)
		<u>2,425</u>		<u>(7,424)</u>
General Accumulated Fund at beginning of year	137,679		86,533	
Transfer from Research Fund	—		58,570	
Local Group Funds	38,115	175,794	—	145,103
	<u>          </u>	<u>          </u>	<u>          </u>	<u>          </u>
GENERAL ACCUMULATED FUND AT END OF YEAR		<u>178,219</u>		<u>137,679</u>

# DETAILED INCOME AND EXPENDITURE ACCOUNT

FOR THE YEAR ENDED 31st DECEMBER 1989

	1989			1988
	£	£	£	£
<b>INCOME</b>				
Subscriptions		7,800		7,165
Donations		271,314		189,244
Research Donations		3,019		7,111
Legacies Received		512		39,110
Annual Draw		19,256		18,340
Sale of Badges, Books, etc.		1,430		10,907
Interest Received		11,486		8,141
Section 64 Grant		46,625		—
Expenses Recovered re: prior year		—		4,389
		<u>361,442</u>		<u>284,407</u>
<b>EXPENDITURE</b>				
Welfare Grants	23,358		15,935	
Research Grants	22,871		17,770	
Other Grants	8,276		400	
Rent, Rates, Light & Heat	14,100		15,983	
Lease of Office Equipment	14,542		15,532	
Office Services	7,468		5,119	
Salaries and National Insurance	90,092		72,891	
Travelling Expenses	23,419		19,868	
Cost of Attendances at World Federation of Hemophilia Congress	—		6,450	
Appeal Expenses	10,386		25,730	
Insurance	1,406		1,033	
Sales Costs	5,596		—	
Bulletin and Update	27,051		—	
Other Postage Costs	9,882		15,849	
Other Printing Costs	19,772		17,794	
Telephone	10,171		9,440	
Stationery	8,579		5,850	
Publications and Subscriptions	7,559		8,900	
W F H Subscriptions	1,452		—	
Audit and Accountancy	1,150		1,376	
Training Events	18,247		11,639	
Meeting Expenses	12,582		8,773	
Indian Haemophilia Society	16		434	
Professional Fees	4,020		1,150	
Bank Charges	325		—	
Depreciation	16,697		16,762	
	<u>359,017</u>		<u>294,678</u>	
		<u>2,425</u>		<u>(10,271)</u>

## RESEARCH GRANTS

### Research Grants paid in 1989

£

Royal Liverpool Hospital	3,000
Royal Free Hospital	14,138
United Medical & Dental Schools	5,406
Lewisham	327

Per Income & Expenditure Account

22,871

### Grants approved to be paid in 1990

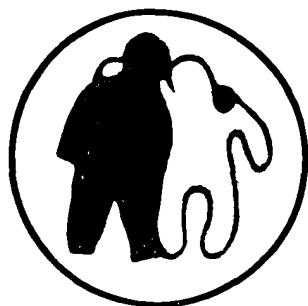
£

Royal Liverpool Hospital	4,500
Royal Free Hospital	2,628
United Medical & Dental Schools	1,053
University Hospital of Wales	5,000
Royal Hallamshire, Sheffield	5,000
Glasgow Royal Infirmary	5,250
Bristol Royal Infirmary	6,230

29,661

Research Grants are charged to the Income and Expenditure account in the year which they are paid.

## NOTES



The Haemophilia Society was established in 1950 to serve the needs of people with haemophilia and similar blood disorders.

The Society represents the interests of people with haemophilia by:—

- providing help to them and their families
- securing high standards of treatment
- making representations to government
- publishing information useful to members, doctors and health care professionals
- giving some support to vital research projects

---

As a supporter of the Haemophilia Society:—

- you encourage a national organisation with over 4,000 members all sharing the same concerns and with the same goal of supporting people with haemophilia
- you can receive regular mailings of all the Society's publications — a quarterly magazine, frequent informative leaflets and occasional special reports

**The Haemophilia Society**  
123 Westminster Bridge Road, London SE1 7HR  
Telephone: 071-928 2020